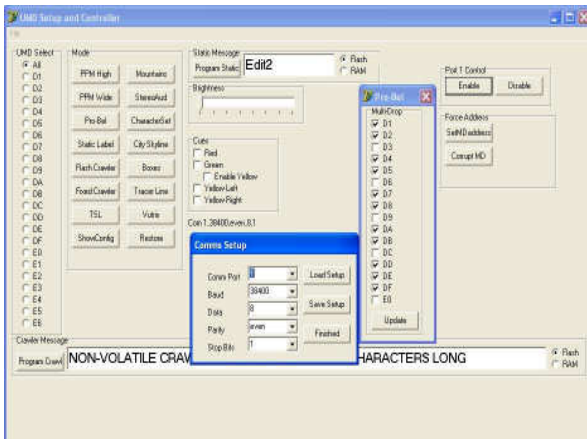


12 Character UMD



Windows GUI configures all UMDs simultaneously or independently from a single 'programming' port.

ROTRONICS SYSTEMS LTD
UNIT 5
RIVERSIDE PARK
FARNHAM
SURREY
GU9 7UG
UK

E: bob@rotronics.co.uk

T: +44(0)1252 722686

 **Rotronics**
Systems Limited

E&OE

VI 21-12-2011

UMD

- Green 12 character UMD
- Red, green and yellow cues
- 8 brightness levels
- Slim, elegant, lightweight, 2 in 19" 1U
- Non-volatile storage for static functions
- Pro-Bel, TSL, Vutrix and Quasar protocol
- No dip switches or mode links.
- Length 222mm, height 44mm, depth 10mm
- Multi mounting options



UMDPSU

- Supports 22 UMDs
- Standard network (pin to pin RJ45/CAT5) cable to each UMD provides power and communications.
- Front 'programming' port for PC (RS232) connection to configure all UMDs to correct application.
- Rear RS422 'data' port for connection to main controller.
- Dual (Backup) Power Supply
- 19" x 2U x 255mm deep